



# *Purse Seine*

*Fishing Innovation*

*Korea Trading & Industries Co., Ltd.*

## INTRODUCTION



**K**orea Trading & Industries Co.,Ltd was founded in 1987 and has been at the forefront in developing and manufacturing for wide range of products from various kind of fishing net, advanced completed net, rope & twines to fishing gears, by pioneering many technical innovations and using sound materials.

**W**orld-wide recognition as a quality producer for products in the field of fisheries industry has been acquired by **Korea Trading & Industries Co., Ltd.**

Because KTI's technological know-how and applications experience is accumulated over many years under strict quality control procedures.

**W**e are ready to make a strong and determined motive to become the world's greatest producer of fishing products through our challenging vision "**UPGRADE 2010**" plan.

**Korea Trading & Industries Co., Ltd** will continue with its firm commitment to quality improvement and technical innovation to support its aim.





### ***“ Largest scale indoor net assembly yard ”***

**K**TI, which has an indoor tuna purse seine assembly yard on a nationwide scale, is possible to assemble any kinds of net flawlessly with utmost delivery time to exclusion of all detriment facts, U.V., rain, etc.

### ***“ The best assembly facilities ”***

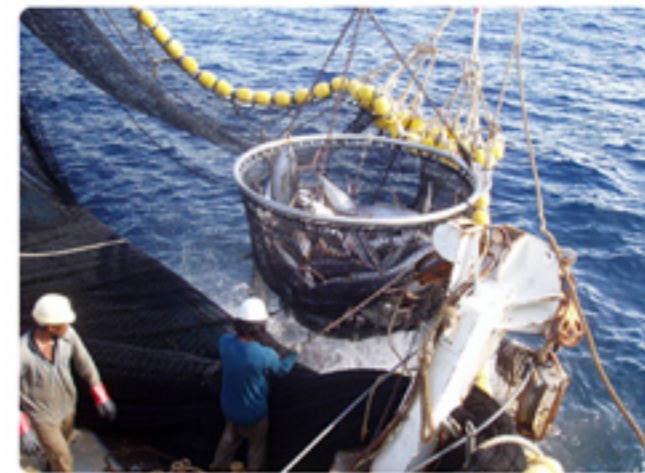
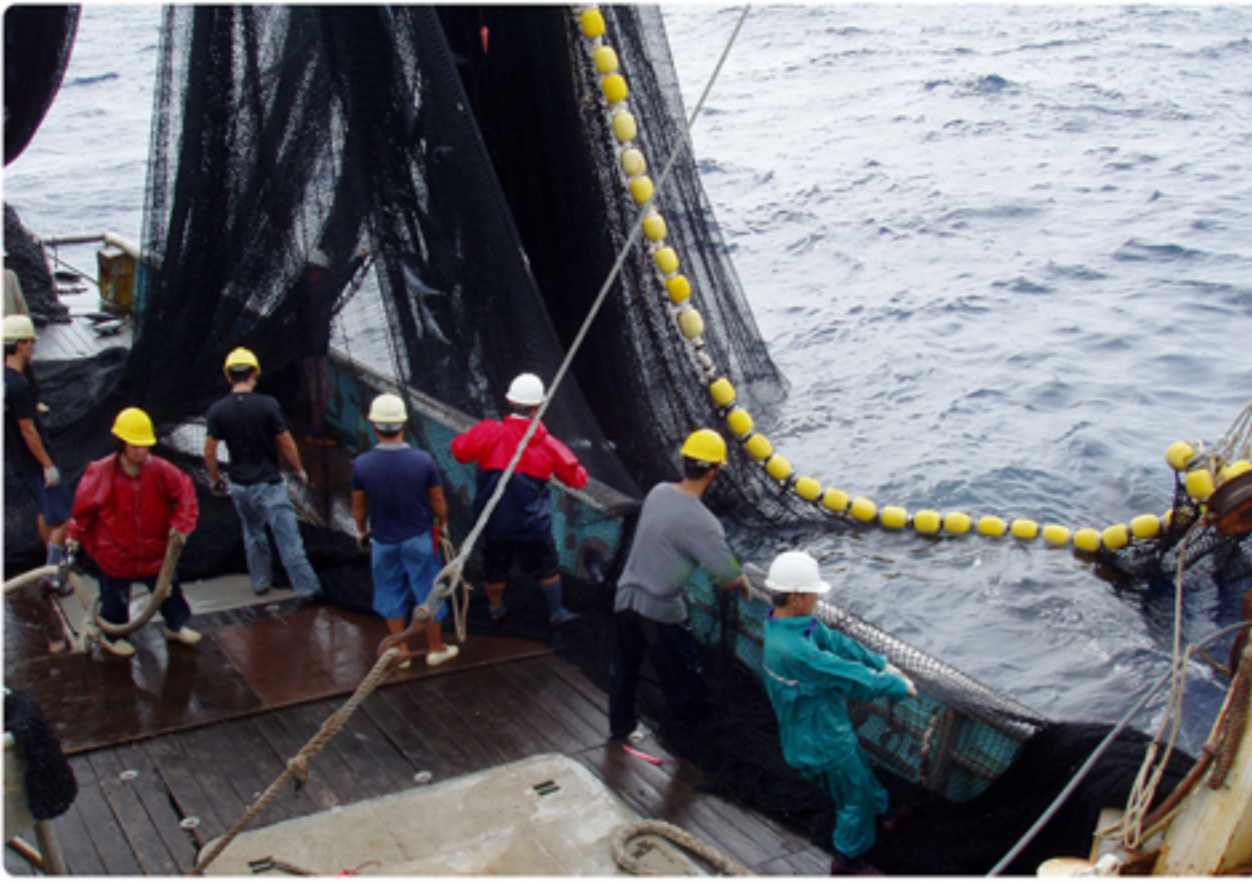
**U**sing hydraulic devices (power block, chain connector, etc..), it can be moved and combined impeccably without any damage caused by incident impacts as well as never permit any fault and defect which used to be occurred on the existing method.

### ***“ Professional ”***

**T**he assembly section has been organized by the specialists who have experienced captin, fishing master and deck master. Furthermore, they are anticipating research and development for the best fishing net to create big catch for precious customers.



*“ We wish big catch with KTI fishing gear ”*



## **NETS**

Our sincere efforts in superior fishing nets created by strict quality control make extra strength, abrasion resistance, uniform mesh size, tight knots, non-fade black dye products.

### **/ Nettings to species**

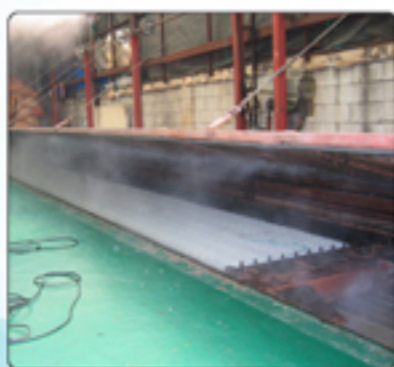
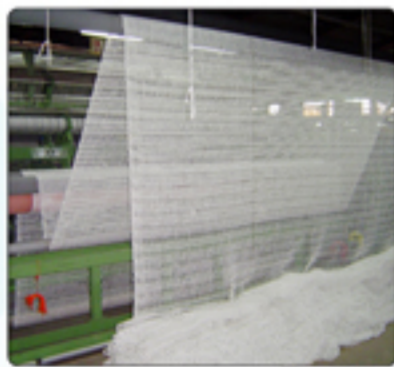
Tuna netting, Mackerel netting, Sardine netting, Anchovy netting, Gizzard netting, Scabbard netting, Squid netting.

### **/ Nettings to Materials**

Nylon, Polyester, Polyethelene.

### **/ Nettings to Construction**

Braided knotted, braided knotless, 3-strand twisted knotted, 2-strand knotless, Rachel knotless.

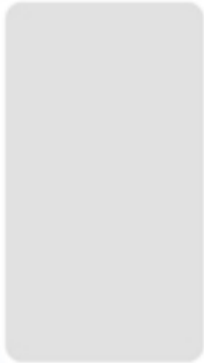


## **Manufacturing Process**

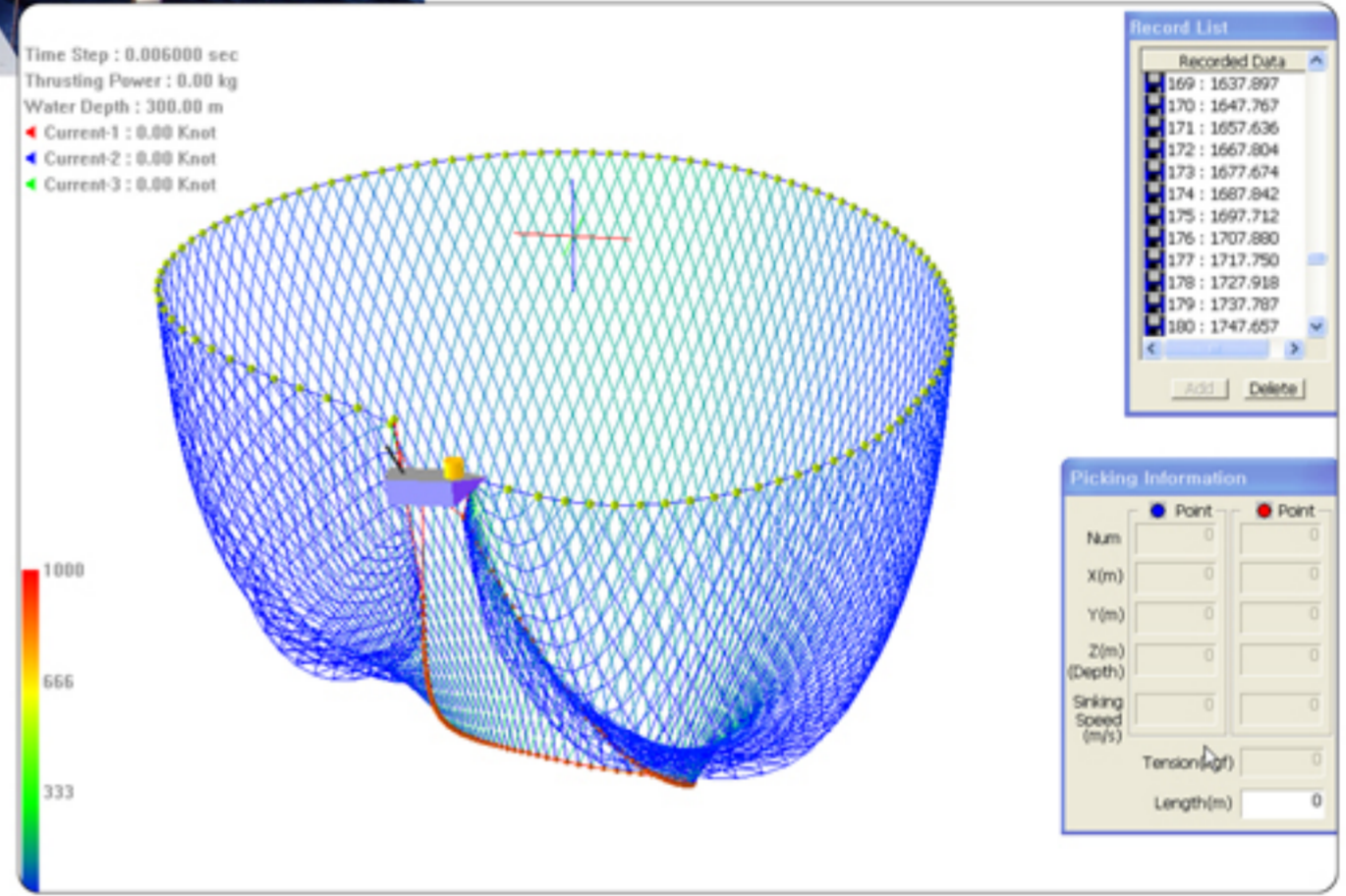
1. Braiding
2. Netting ( Raschel knotless netting)
3. First inspection (mending & repairing)
4. Preliminary heat setting (lengthway or depthway)
5. Second inspection (mending & repairing)
6. Dyeing
7. Dehydrating
8. Lengthway stretching (vacuum heat setting)
9. Third inspection (mending & repairing)
10. Tarring
11. Final inspection (mending & repairing)
12. Packing or assembly



**The most advanced  
KTI technology.**

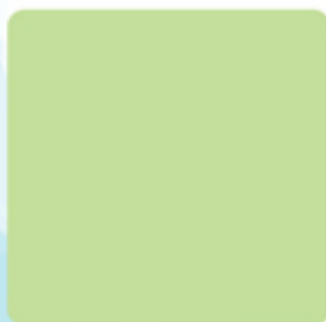


PURSE SEINE SIMULATION.



## BRAIDED TWINES

Like our superior netting, KTI Braided Twine also gives you uncompromising commitment in quality and innovation.



TWINE SIZE	RUNNAGE (M/KG)	B/S (KG)
# 24/27	570.8	84.94
# 30	448.3	106.18
# 36	378.7	127.41
# 42	289.6	169.99
# 48	262.1	190.51
# 54	234.7	211.68
# 60	211.8	232.85
# 72	180.0	270.82
# 84	151.7	312.48
# 96	114.8	383.04
# 120	102.8	443.52
# 132	80.0	564.48
# 168	70.2	645.12
# 210	53.2	846.72
# 300	35.9	1209.60
# 350	23.5	1814.40
# 400	16.4	2419.20



## FLOATS

KTI floats are made of superior raw materials, to give you long, dependable service.



KTI-NO	KTI FLOAT SPECIFICATIONS			COLOR
	L x OD x HD (mm)	WEIGHT (g)	BUOYANCY	
SHE-85	270 x 248 x 48	1,355	8,500	Yellow
SHE-70	250 x 220 x 42	979	7,000	Yellow
SHE-50	225 x 204 x 40	770	5,000	Yellow
SHE-40	196 x 190 x 37	621	4,000	Yellow
SHE-30	180 x 169 x 33	438	3,000	Yellow
SHE-25	177 x 152 x 28	370	2,400	Yellow
SHE-20	173 x 135 x 28	290	1,900	Yellow
SHE-15	159 x 125 x 28	250	1,450	Yellow
SHE-10	170 x 110 x 20	185	950	Yellow / White
SHE-06	145 x 94 x 20	115	630	Yellow / White
SHE-03	105 x 70 x 20	56	310	Yellow / White
SS - 03	130 x 110 x 25	140	920	Yellow / White
SS - 05	160 x 110 x 25	170	1,100	Yellow / White
SH - 30	190 x 157 x 27	300	3,000	



## CHAINS

### Tuna Net Chain (TN)

We use high quality steel, especially formulated and heat treated for tuna fishing. Every heat treated lot, approximately 3000 lbs. is sampled and destructively tested for material strength and link elongation in order to assure compliance to the design criteria. All Tuna Net Chain is then proof tested, 100% every link.

SIZE	KTI CHAIN SPECIFICATIONS				WEIGH PER 100 FEET
	WIRE DIAMETER	INSIDE DIMENSION		WORKING LOAD LIMIT	
		LENGTH	WIDTH		
7/16" (11 mm)	0.464" (12 mm)	1.37" (35 mm)	0.75" (19 mm)	8,750 LBS (3,969 KGS)	217 LBS (98 KGS)
1/2" (13 mm)	0.519" (13 mm)	1.72" (44 mm)	0.83" (21 mm)	11,300 LBS (5,126 KGS)	251 LBS (114 KGS)
5/8" (16 mm)	0.630" (16 mm)	1.94" (49 mm)	0.91" (23 mm)	19,500 LBS (8,845 KGS)	367 LBS (166 KGS)

## ROPES



## ACCESSORIES



Purse Ring



Chain Connectors



Choker Hook



Rings



Connecting Links



Pear Link



Power Block



Triangle with round rings



Polyform Buoy



***Korea Trading & Industries Co., Ltd.***

**ALGER OFFICE**

*CENTRE DES AFFAIRES ZERALDA  
RUE DES FRERES BOUSSALEM ZERALDA  
LOCAL NO. 14 ET 15 ALGIERS-ALGERIA*

*TEL : + 213 21 32 00 45*

*FAX : + 213 21 32 55 84*

*E - MAIL : ktialgerie@yahoo.fr*

*naap2005@hanmail.net*

**HEAD OFFICE**

*1503-8, DADAE-DONG, SAHA-GU,  
BUSAN, KOREA.*

*TEL : + 82 51 264 0023~6*

*FAX : + 82 51 264 0027*

*E - MAIL : master@koreakti.co.kr*

*http://www.koreakti.co.kr*